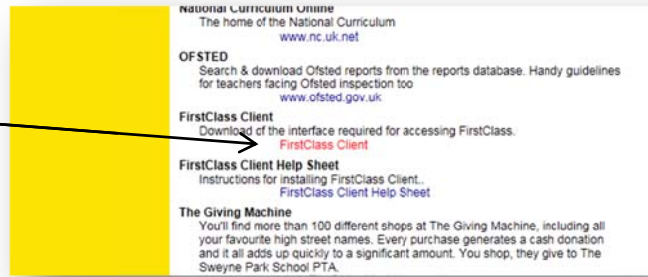
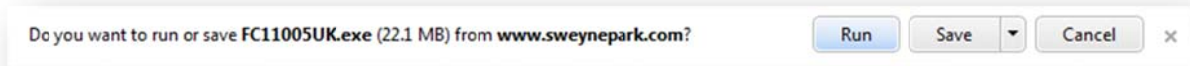


# INSTALLING THE FIRSTCLASS CLIENT SOFTWARE

Download the software from  
 sweynepark.com > Useful Links >  
 FirstClass Client



When using Windows 7 click Run when this message appears.



FirstClass Client will begin to installation.

- |   |  |            |   |  |              |
|---|--|------------|---|--|--------------|
| 1 |  | Click Next | 5 |  | Click Next   |
| 2 |  | Click Yes  | 6 |  | Click Next   |
| 3 |  | Click Next | 7 |  | Wait....     |
| 4 |  | Click Next | 8 |  | Click Finish |

# INSTALLING THE FIRSTCLASS CLIENT SOFTWARE

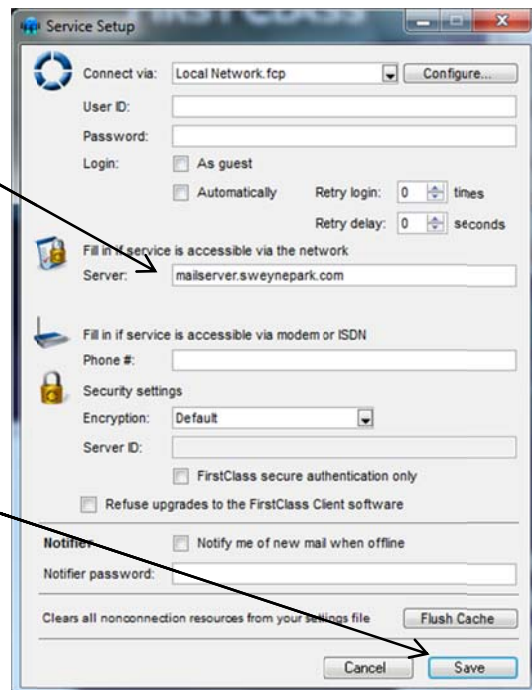
The Login Dialogue box automatically appears after the install. To set this up for the Sweyne Park system do the following:

- Click on the **Advanced** button



- Click on the **Setup** button

In the Server box type  
**mailserver.sweynepark.com**



Click **Save**

You can now log onto FirstClass using the Username and Password you use at school.